

**Community- Natural Resource Management and Climate Change Adaptation on the Andaman Coast of Thailand: Mangrove Restoration, Island resilience and Livelihood**

**Speaker:** Dr Lin, Pei-Shan (Sonia)  
Visiting Postdoctoral Fellow  
Department of Geography, NUS

**Chair:** David Taylor, Department of Geography, NUS

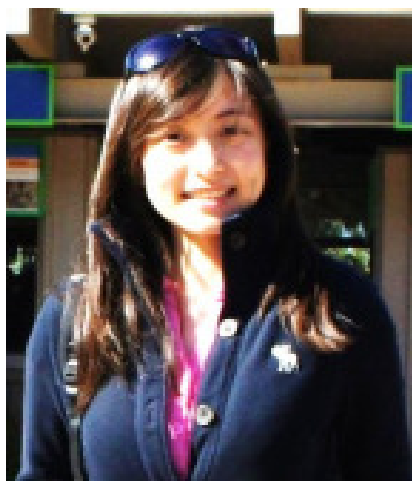
**Date/Time:** Friday, 7 November 2014, 3.30 – 5.00 pm

**Place:** Earth Lab (AS2 02-03), Department of Geography, NUS

*Abstract*

The 2004 Indian Ocean tsunami provoked many NGOs to assist coastal communities in developing countries. Since then, the issue of climate change has led these organizations to offer further assistance to reduce their vulnerability by managing natural resources through community-based and ecosystem-based approaches. Such NGO-led community-based natural resource management (CBNRM) is derived from and embedded in global scale initiatives responding to climate change. They not only changed the environment and landscape but also altered social relations among stakeholders, as the process often involved resource allocation, access to natural resources, and benefit distribution issues. This research investigates the relationship between social relations of stakeholders and natural resource management to understand how climate change empowers or disempowers stakeholders across scales in managing the local environment, and how impact reduction projects build local coastal communities' resilience to climate change, particularly how they affect their social processes. Koh Klang, an island located on the Andaman Coast of Thailand, is a case study because of its vulnerability and the adaptation strategies that have developed from long-standing socio-economic and environmental stresses. Qualitative mixed methods comprising interviews, participant observation, and transect walk were conducted in the field. This study hopes to contribute toward understanding of the cross scalar discrepancy in building coastal resilience to climate change impacts through CBNRM, as well as the inter-empowerment among stakeholders and the environment.

*About the Speaker*



Pei-Shan Sonia Lin is a postdoctoral research fellow currently based with NUS Geography. She received PhD. from National Taiwan University with major in geography in 2013. Her research focuses on nature-society relations, and social/human dimensions of environmental change and natural resource management. Previously, she was a researcher at the Taiwan Typhoon and Flood Research Institute, National Applied Research Laboratories. Her doctoral dissertation addressed the relationship between social relations and nature-society dynamics by studying a community-based river conservation initiative in an indigenous village in Taiwan. Currently, she based herself in Singapore and conduct a research project about community-based natural resource management and climate change adaptation in Southern Thailand.

ADMISSION IS FREE – ALL ARE WELCOME