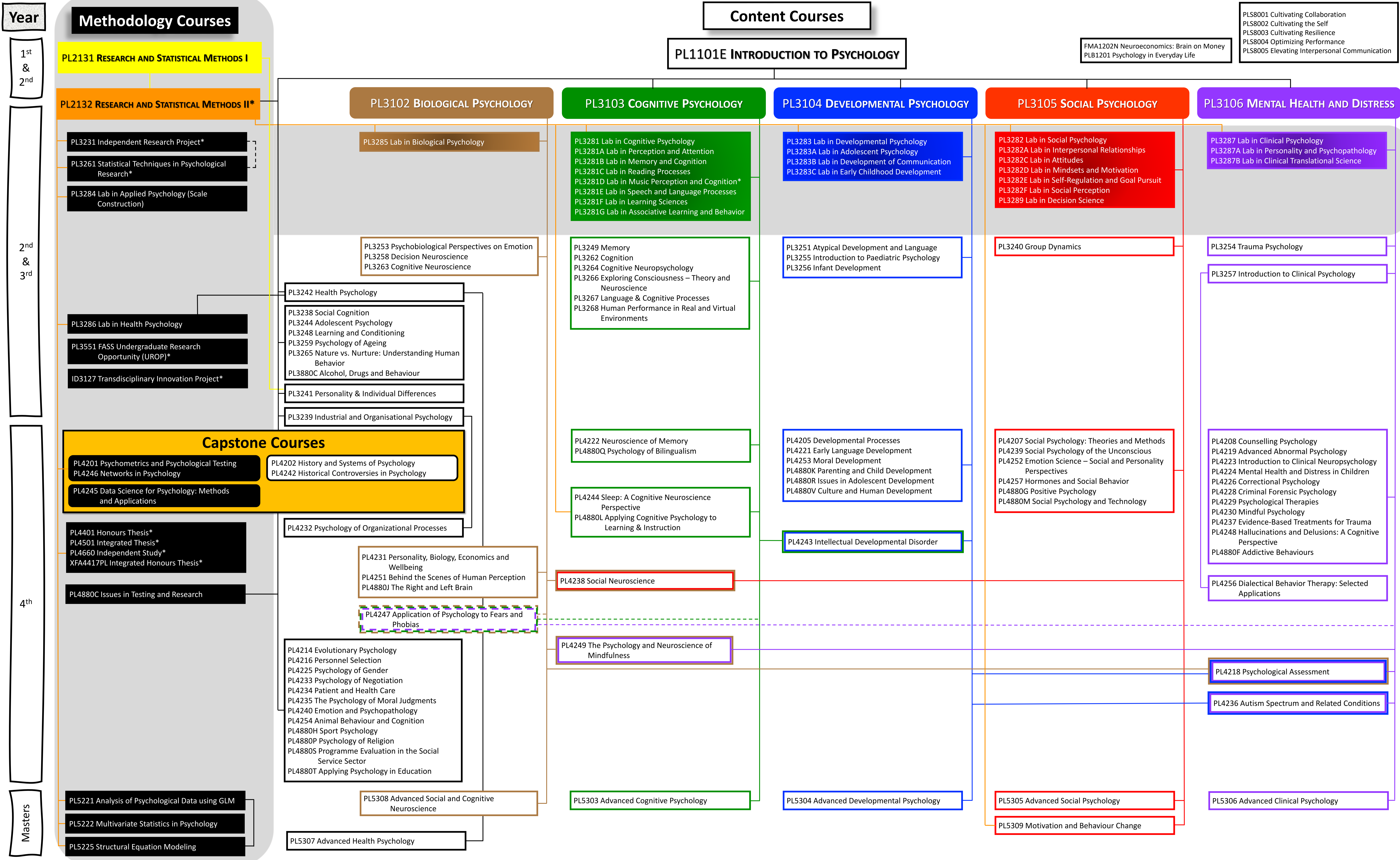




PSYCHOLOGY UNDERGRADUATE CURRICULUM



Notes

- The undergraduate curriculum has two main pillars: empirical/methodological courses and content courses. Empirical courses are either methodological or project-based courses – these courses aim to equip students with empirical skills, which they would then be able to use for knowledge creation. Content courses aim to disseminate psychological knowledge.
- The chart summarises the connections (and pre-requisites) and flow of the curriculum across the four years. The core content courses are colour coded. Elective courses that build on or have the relevant core course as a pre-requisite are colour-coded accordingly.
- For ease of reference, years (1st, 2nd, etc.) are used to represent the ideal and recommended progression, but students are able to take any course at any time as long as they meet its pre-requisites.
- The capstone courses should only be taken in the final year as they are meant to bookend your Psychology journey.
- Masters / PL5XXX courses are graduate level but can be read by Honours students.

—	PL1101E or others	—	Biological	* Additional pre-requisites
—	PL2131	—	Cognitive	--- Choice of either course
—	PL2132	—	Developmental	
		—	Social	
		—	Abnormal	