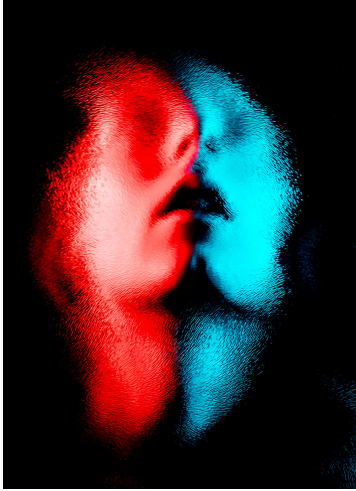


Social Work with Persons with Borderline Personality Disorder

FACE TO FACE SESSION



About the Course

This module aims to inform participants with knowledge (aetiology, symptomology, evidenced-based treatment, treatment challenges) of personality disorders, focusing largely on borderline personality disorder. Special focus will be made on self harming and suicidal behaviours among persons with borderline personality disorder. Engagement approaches and challenges will be discussed.

At the end of the course, participants will be able to:

1. Attain an understanding of the aetiology, symptomology and evidence-based treatment for persons with borderline personality disorders.
2. Appreciate the effects of the symptoms of borderline personality disorder on afflicted individuals, their families, and social and helping systems.
3. Develop an understanding and management of self harm and suicidal behaviours in persons with borderline personality disorders.
4. Apply the Integrated Illness Causation Model and systemic approach in the management of cases involving clients with borderline personality disorder and complex psychosocial presentation. A special focus on self-management will be made.

Who Should Attend

Social workers, Social work Associates, other allied health professionals in a human service field (e.g. counselling, community work, etc.) with at least two years of clinical experience



JOIN US

Date: 27 May 2024
Time: 9am - 5.30pm



REGISTER NOW @

<https://bit.ly/mhsc24>
to secure your seat



CONTACT US @

swkcpepc@nus.edu.sg

ABOUT THE INSTRUCTORS

Tracy is principal medical social worker and family therapist with the Institute of Mental Health. She is also trained in crisis management and trauma-informed practices. Tracy is a certified Mental Health First Aid and Crisis Intervention Stress Management (Individual) Instructor.

Tracy spearheads the Staff Support and Assistance Programme in IMH that focuses on training and providing emotional support and intervention to staff who experience stressful or traumatic incidents. Apart from performing case management, psychoeducation, psychosocial and risk assessments, Tracy also provides individual, marital and family therapy to patients and their families.



Ms Tracy Wee

*Principal Medical Social Worker,
Institute of Mental Health*



Mr Gideon Ng

*Principal Medical Social Worker,
Institute of Mental Health*

Gideon started his social work career at the Institute of Mental Health in 2009. Gideon is the Deputy Head of the Medical Social Work (MSW) Department and is also overseeing the medical social work services at the hospital's department of emergency and crisis care. He also leads the clinical development of social work services in the hospital to improve patient's quality of care.

Gideon has obtained his Master of Social Work from the National University of Singapore and holds post graduate qualifications in counselling as well as clinical supervision. Besides teaching at the University, Gideon also speaks regularly in various settings to provide training on social work and mental health.

Course Fees

Description	Total Nett Course Fee, Before GST	Total Nett Course Fee, Incl. GST
Full course fees (excl GST)	\$850.00	\$926.50
Early Bird Tier Funding *Applicable for Early bird or NUS Alumni	\$425.00	\$463.25
Premium Tier Funding *Applicable for Individuals working in organizations registered with NCSS or MOH	\$510.00	\$555.90
Classic Tier Funding *Applicable for All Helping Professionals	\$595.00	\$648.55

***Early bird rates end on 26 April 2024**

CPE Credits

Course participants are eligible for Continuing Professional Education (CPE) credits with the Singapore Association of Social Workers (SASW). One CPE credit will be awarded for each contact hour. Approval of CPE credits are to be submitted through the CPE Log Book under each accredited professional's account.

TERMS AND CONDITIONS

- 1.Classes will be formed only when a minimum class size is being met. Organiser reserves the right to cancel or postpone any programme at short notice, or may change the modality of the class and at its absolute discretion without assigning any reason for such cancellations or postponements. Refund will be made if payment has been received.
- 2.There will be no makeup lesson if participants miss any class.
- 3.No withdrawal is allowed once the participant is being offered into the programme. Participants can either find a replacement to take his/her place or pay a penalty of 30% of the full course fees incl. GST.
- 4.Photographs and/or videos may be taken during our programme for audit purposes.